



FutureFlash® Installation Information

DESCRIPTION

FutureFlash® is a prefabricated waterproofing membrane designed for use around windows and doors, under stucco and other exterior wall systems. The product may be used to strip in the flanges of wood, metal and vinyl windows, or as a flashing wherever a uniform, dependable waterproofing barrier is required. FutureFlash® is constructed of two high-performance films with a core of rubberized asphalt sandwiched between them. The outer laminated polyethylene film is tear-resistant and tough. The polyester film layer adds dimensional stability to the product. FutureFlash® is engineered to be the strongest, most dependable waterproofing system available to withstand extreme jobsite conditions.

FutureFlash® is attached using nails, staples, screws and other conventional fastening methods. The rubberized asphalt core self-seals around fasteners to eliminate leaks. FutureFlash® must be adhered to the building paper using the FutureFlash® Sealant. This process effectively incorporates the window into the building system and protects the structure from water damage caused by soaking or wind-driven rain, snow and ice.

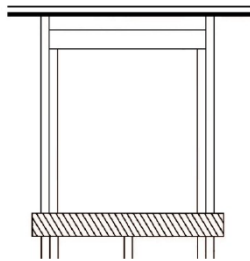
USES

FutureFlash® provides protection from leaks in structures of all types and may be used to waterproof windows, doors, vents, etc.

INSTALLATION

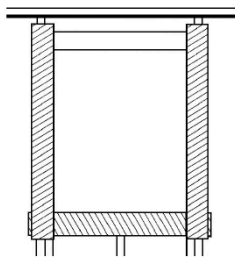
- Install gray side out with black side against the substrate.
- Attached to studs using nails, screws or staples
- FutureFlash® is easily cut with a sharp utility knife or scissors.
- Do not expose to direct sunlight for more than 60 days.
- **WARRANTY ONLY APPLIES WHEN USING FUTURE FLASH® SEALANT DURING INSTALLATION**

INSTALLATION STEPS – FLAT WINDOW



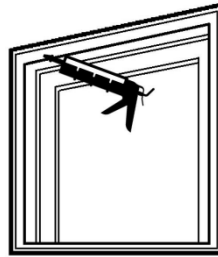
Step 1

Attach FutureFlash® horizontally to the sill plate and extend flashing 6", 9" or 12" past left and right vertical king studs.



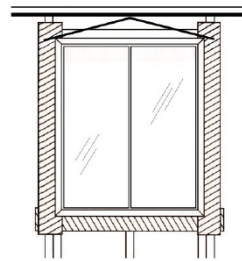
Step 2

Attach FutureFlash® vertically to the left and right king studs, extending flashing 6", 9" or 12" below sill plate to overlap sill flashing. Flashing should extend 6", 9" or 12" above bottom of header beam to ensure proper lapping.



Step 3

Before window is set, apply a generous bead (1/2") of FutureFlash® Sealant™ to the back side of the window nailing flange before setting window into flashed opening.

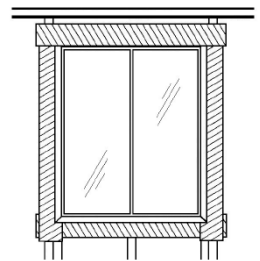


Step 4A

Set window, level and attach. Apply a second generous bead (1/2") of sealant over the transition seam of the window nailing flange and flashing, tool flat.

Step 4B

Apply a 1/2" bead of FutureFlash® Sealant™ in a pyramid shape.



Step 5

Attach FutureFlash® horizontally to the header beam, extending flashing 6", 9" or 12" past left and right vertical king studs. Flashing will lap over horizontal exterior window flange at the top of the window.

RECOMMENDED TEMPERATURES	RANGE
Application Temperature Range (Surface and Air)	40°F – 105°F (4.4°C – 41°C)
Service Temperature Range	-20°F – 170°F (-29°C – 77°C)